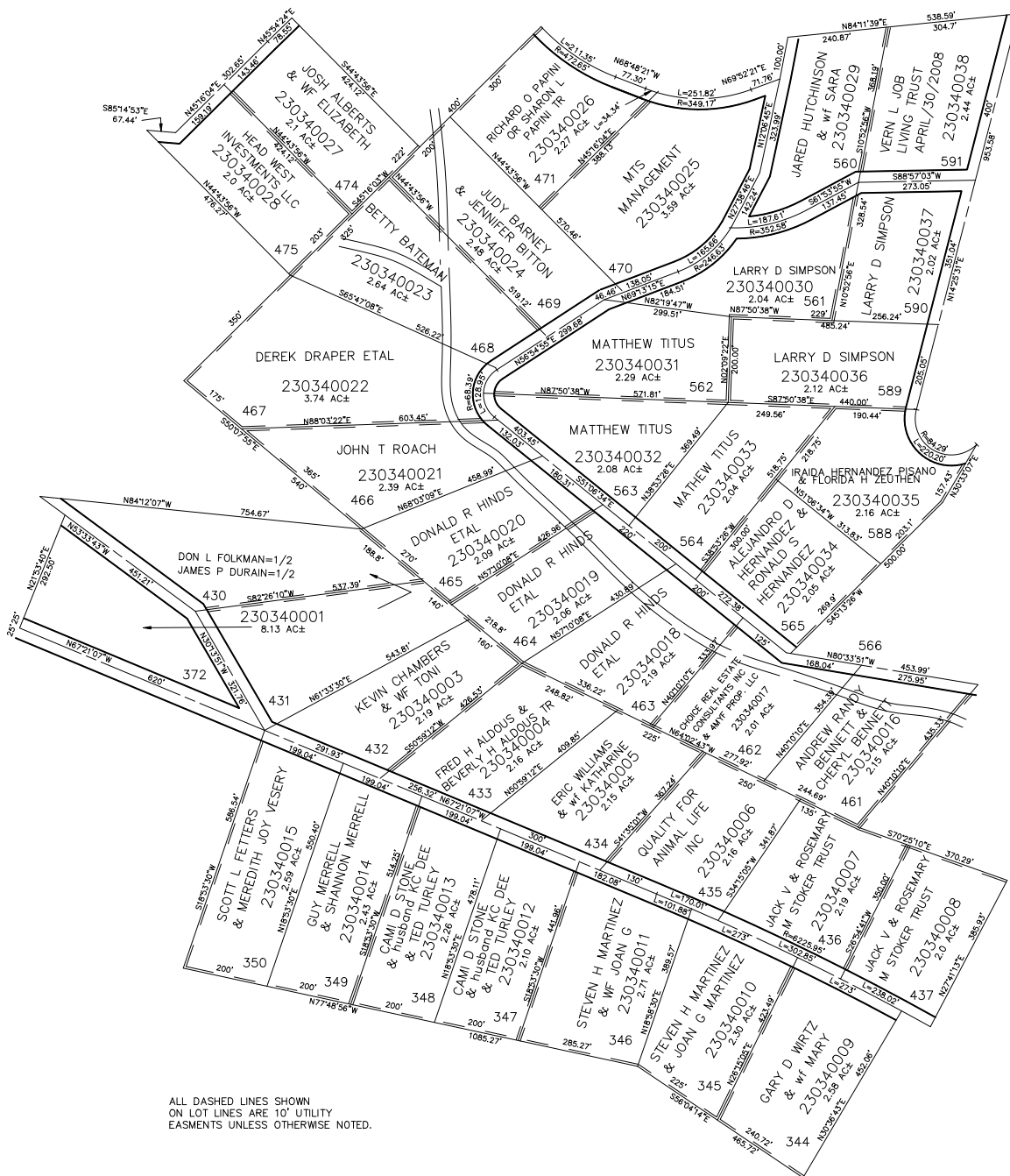


PART OF SEC. 29-32, T.7N., R.3E., S.L.B. & M.
EVERGREEN PARK SUBDIVISION NO. 1

IN WEBER COUNTY
SCALE 1" = 200'

TAXING UNIT: 520



SEE PAGE 37

ALL DASHED LINES SHOWN
ON LOT LINES ARE 10' UTILITY
EASMENTS UNLESS OTHERWISE NOTED.

FOR COMPLETE ENG DATA SEE
ORIGINAL DEDICATION PLAT IN
BOOK 13, PAGE 54 OF RECORDS.